

TASCAM DM24 LCD SCREEN REPLACEMENT STEP-BY-STEP GUIDE

I recently bought a used DM24 for a very good price. It was in good working order except for the LCD display which had developed a series of lines.

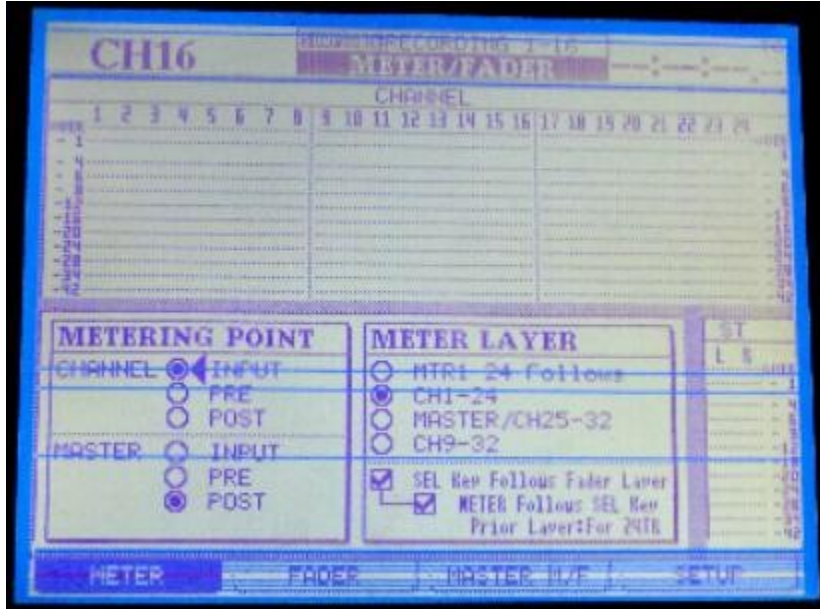


Figure 1 -- Before

I was able to order a replacement screen from TEAC Canada (Tascam) for \$146 CDN and was able to install it in about two hours.

I thought it might be useful to provide a Step-By-Step guide in case anyone else has to do this.

NOTE: You'll really need a second pair of hands to steady parts of the console as you work.

1. Remove the case screws as shown:
 - Left side -- 6 screws
 - Right side -- 6 screws
 - Rear -- 5 screws
 - Arm rest -- 3 screws

TASCAM DM24 LCD SCREEN REPLACEMENT STEP-BY-STEP GUIDE



6 SCREWS
(LEFT SIDE)

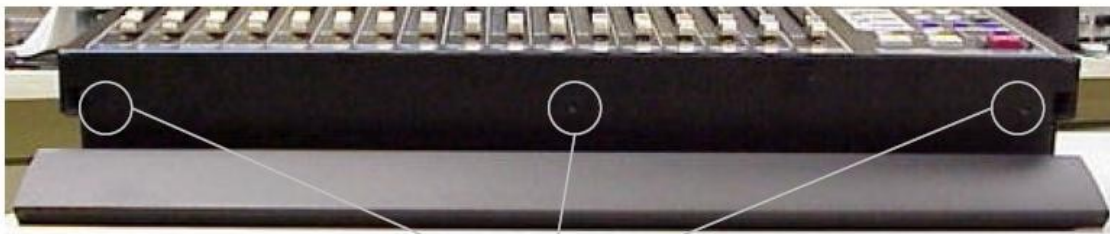


6 SCREWS
(RIGHT SIDE)

TASCAM DM24 LCD SCREEN REPLACEMENT STEP-BY-STEP GUIDE



5 SCREWS
(REAR)



3 SCREWS
(ARM REST)

Figure 2 -- Case Screws

2. Remove the knobs from the four "POD"s; Jog Wheel knob and the hexagonal nut underneath it.
3. Open the DM24 like a clam shell, hinging it open at the faders. Separate the two halves, placing a cloth over the bottom edge to protect the top surface.

TASCAM DM24 LCD SCREEN REPLACEMENT STEP-BY-STEP GUIDE



Figure 3 -- DM24 Clam-shelled

4. Cut the four plastic cable ties to free up the wiring harness.

TASCAM DM24 LCD SCREEN REPLACEMENT STEP-BY-STEP GUIDE



Figure 4 -- Various PCBs

5. Disconnect P1 and P2 from the LCD SUB PCB (**Printed Circuit Board**).
6. Remove the 2 screws holding the LCD SUB PCB in place.
7. Slide the LCD SUB PCB forward out of the plastic clip.

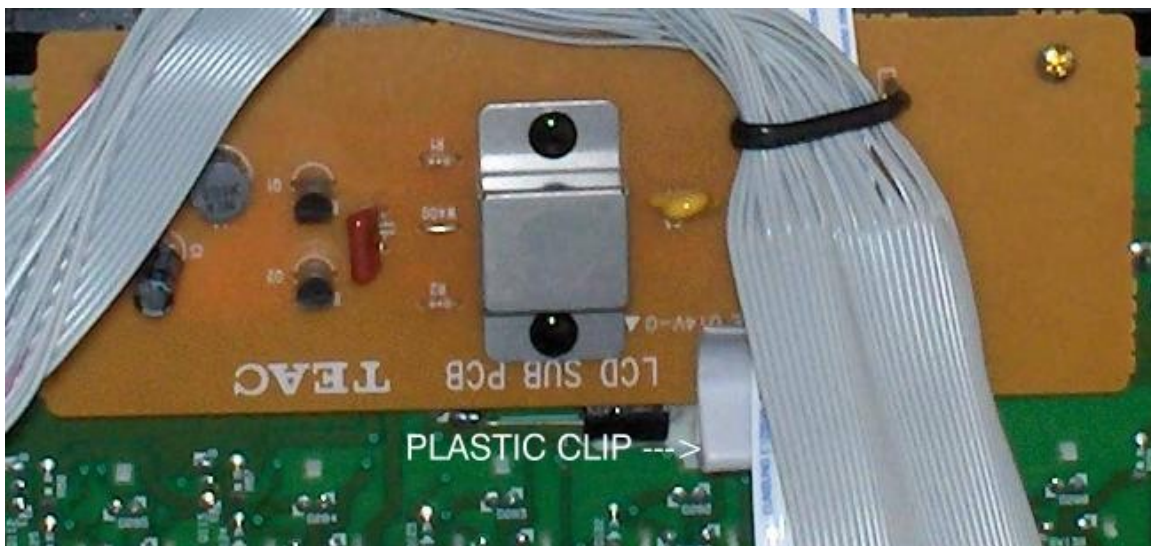


Figure 5 -- LCD SUB PCB

TASCAM DM24 LCD SCREEN REPLACEMENT STEP-BY-STEP GUIDE

8. Remove the 14 screws retaining the PANEL PCB.
9. Carefully slide the PANEL PCB away from the DISPLAY PCB. Be careful of the push button caps which have a tendency to fall out.
10. Carefully disconnect the flat ribbon cable from CN1 of the DISPLAY PCB.



Figure 6 -- Display PCB -- CN1

11. Remove the 4 screws securing the DISPLAY PCB.
12. Slide the DISPLAY PCB out.
13. Remove the protective plastic film from the replacement DISPLAY PCB. Be careful to avoid getting finger marks on the front surface.
14. Position the new DISPLAY PCB in place above the 4 mounting posts.
15. Replace the 4 screws from Step 11.
16. Gently reseat the ribbon cable in CN1 of the DISPLAY PCB,
17. Carefully slide the PANEL PCB back into place. Watch for crooked or fallen switch caps.
18. Loosely replace 4 corner screws to hold the PANEL PCB in place. Flip the entire control surface vertically to check for misaligned switch caps or LEDs.
19. Lay the control surface flat again, and replace the remaining 10 screws to secure the PANEL PCB. Refer to the photos to determine the position of the metal cable ties and the L-bracket from Step 8.
20. Slide the LCD SUB PCB into position and replace the 2 screws from Step 7.
21. Reconnect P1 and P2 from Step 6.
22. Flip the entire control surface vertical again. Have someone support it.

TASCAM DM24 LCD SCREEN REPLACEMENT STEP-BY-STEP GUIDE

23. Check all ribbon connectors which might have become dislodged while you were working. Reseat as necessary.
24. Make sure the POWER switch is OFF (button out). Reconnect the power cord.
25. Avoiding contact with power supply components; turn on power.
26. Watch the DM24's boot sequence on the new display; to make sure everything is normal.
27. Turn off the power. Disconnect the power cord.
28. Lay the control surface flat again.
29. Replace the plastic cable ties from Step 4.
30. Fold the control surface back down over the case bottom. (Close the clam.)
31. Replace the case screws from Step 1.

Hopefully, your display should now look like this -- no lines.

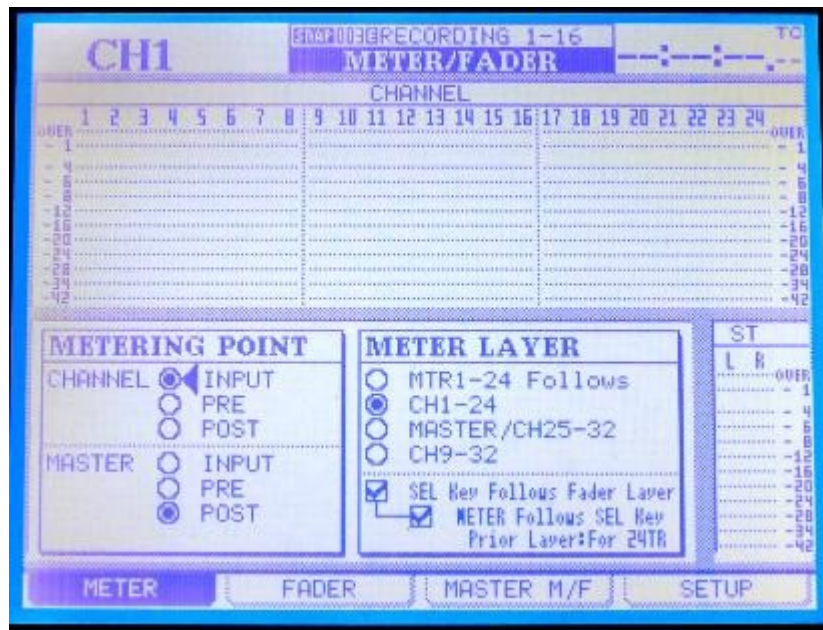


Figure 7 -- After